



City Campus East at Northumbria University

Jan 09, 2025 15:15 GMT

£3m funding to evaluate health and social care improvements

Northumbria University researchers have received £3m of funding from the [National Institute for Health and Care Research](#) (NIHR) to evaluate and support the transformation of services and outcomes across the NHS and care services.

The funding, provided by NIHR [Health and Social Care Delivery Research](#) (HSDR), will see the creation of a specialist team at Northumbria University which will focus on evaluating complex innovations in health and social care.

Their findings will provide evidence to inform decision making around policy and practice for services, organisations and delivery.

Announcement of the award comes shortly after the Government announced the launch of '[Change NHS](#)' which aims to build a health service fit for the future through the development of a new ten-year health plan. The work, led by Secretary of State for Health and Social Care, Wes Streeting and Chief Executive for NHS England Amanda Pritchard follows the [independent review by Lord Darzi](#) into the state of our health service and the reforms that are needed.

The [IDEAS National Evaluation Team](#), which will officially launch in February 2025, will bring together experts from different fields including evidence synthesis, qualitative methods, quantitative and routine data, mixed methods, implementation science and knowledge mobilisation and health economics, as well as those working in and using the services across the healthcare sector.

Working collaboratively, the interdisciplinary team will assess the success or otherwise of new or changing services, make suggested improvements and inform decisions around how to spend money on health and social care services in the future to ensure the right people get access to the right services at the right time.

[Professor Sonia Dalkin](#), Co-Director of the IDEAS National Evaluation Team at Northumbria University, said: "We're delighted to have secured funding from NIHR to drive our work in this area forwards.

"We have an in-depth, practical understanding of the challenges faced by our health and social care services. Our team is already embedded within the existing regional and national health and care research infrastructures with many of us previously having worked across the sector. We have well established links to regional and national UK policy makers, health and care systems in the regional and devolved nations as well as connections to services, participants, and other stakeholders within those nations. We also have access to regional and national routine health service data, and research support and delivery infrastructure, to support our evaluations."

[Professor Angela Bate](#), Co-Director of the IDEAS National Evaluation Team, added: "By bringing together experts in different fields, with a wealth of

knowledge of these systems and services, we will be able to develop findings that can inform decision making around both practice and policy that will lead to health and care service advances, improved cultures and deeper collaboration across the sectors. This will also allow for further innovation in the methods used in health and social care evaluation”

The project will also be supported by a National Advisory Group, which will include partners and stakeholders who can provide additional methodological and service expertise particularly during the early scoping and co-design phases for projects, and a Patient and Public Involvement and Engagement Group, who will ensure that the team’s evaluations include people from all different backgrounds.

Following the [Medical Research Council’s updated framework for developing and evaluating complex interventions](#) the plan is to align any work carried out by the IDEAS National Evaluation Team with the new guidance around utilising an interdisciplinary approach. Each evaluation project will include representatives from the Patient and Public Involvement and Engagement Group, relevant partners and people from the services being evaluated to allow for the most holistic insights to be developed to make the most practical and effective recommendations.

To celebrate the award, Northumbria University will also be hosting a three-day symposium in January focused on bringing together experts to discuss multidisciplinary evaluation.

[‘The Future of Evaluation in Health and Social Care’](#) will bring together national and international perspectives, to discuss practical application of evaluation methods, and explore how drawing together diverse methods of evaluation could have a significant impact on the future evolution of health and social care interventions, policies and services.

Find out more about the event [by visiting the Northumbria University website](#).

To speak to the IDEAS National Evaluation Team at Northumbria University please [email the team here](#) or to find out more about their work [please visit their website](#).

Northumbria University is dedicated to reducing health and social inequalities, contributing to the regional and national workforce and improving social, economic and health outcomes for the most marginalised in society. Through its new [Centre for Health and Social Equity](#), known as CHASE, researchers will be delivering world-leading health and social equity research and creating innovative, evidence-based policies and data-driven solutions to bring impactful change across the region, the UK and globally.

ENDS

Notes to editors

The mission of the National Institute for Health and Care Research (NIHR) is to improve the health and wealth of the nation through research.

We do this by:

- funding high quality, timely research that benefits the NHS, public health and social care
- investing in world-class expertise, facilities and a skilled delivery workforce to translate discoveries into improved treatments and services
- partnering with patients, service users, carers and communities, improving the relevance, quality and impact of our research
- attracting, training and supporting the best researchers to tackle complex health and social care challenges
- collaborating with other public funders, charities and industry to help shape a cohesive and globally competitive research system
- funding applied global health research and training to meet the needs of the poorest people in low and middle income countries

NIHR is funded by the Department of Health and Social Care.

Our work in low and middle income countries is principally funded through UK international development funding from the UK government.

Further information

Medical Research Council's updated framework for developing and evaluating

complex interventions

Published open access in [The BMJ](#).

DOI: <https://doi.org/10.1136/bmj.n2061>

UNIVERSITY OF THE YEAR 2022 (Times Higher Education Awards)

Northumbria is a research-intensive university that unlocks potential for all, changing lives regionally, nationally and internationally.

Two thirds of Northumbria's undergraduate students come from the North East region and go into employment in the region when they graduate, demonstrating Northumbria's significant contribution to social mobility and levelling up in the North East of England.

Find out more about us at www.northumbria.ac.uk

--- Please contact media.communications@northumbria.ac.uk with any media enquiries or interview requests ---

Contacts



Rik Kendall

Press Contact

PR and Media Manager

Business and Law / Arts, Design & Social Sciences

rik.kendall@northumbria.ac.uk

07923 382339



Andrea Slowey

Press Contact

PR and Media Manager

Engineering and Environment / Health and Life Sciences

andrea.slowey@northumbria.ac.uk

07708 509436



Rachael Barwick

Press Contact

PR and Media Manager

rachael.barwick@northumbria.ac.uk

07377422415



James Fox

Press Contact

Student Communications Manager

james2.fox@northumbria.ac.uk

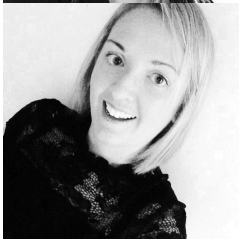


Kelly Elliott

Press Contact

PR and Media Officer

kelly2.elliott@northumbria.ac.uk



Gemma Brown

Press Contact

PR and Media Officer

gemma6.brown@northumbria.ac.uk